

clinell®

Hand Hygiene



Hands are the most common way to transfer germs from person to person or surface to person.

Clinell Antibacterial Hand Wipes are suitable for cleaning and disinfecting hands. The powerful formula kills 99.999% of germs on both clean and visibly dirty hands, ideal when you don't have access to soap and water.

Practicing good hand hygiene on-the-go helps to stop the spread of infection, keeping yourself, colleagues, families and the community safe.



When to use

Please clean your hands when performing these tasks:



When getting into the vehicle



Before and after eating



Before touching eyes, nose or mouth



After coughing or sneezing



When changing masks



After smoking



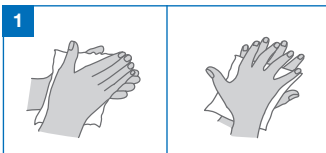
After going to the toilet



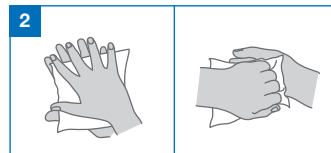
After cleaning surfaces

How to use

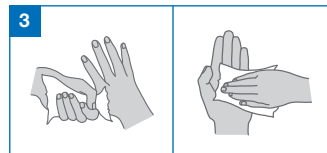
Please follow the steps below for at least one minute:



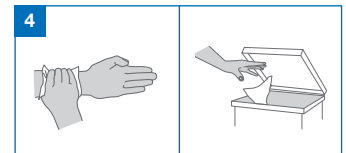
1 Rub hands palm to palm. Rub back of each hand with the palm of the other hand with the fingers interlaced.



2 Rub palm to palm with fingers interlaced. Rub with back of fingers to opposing palms with fingers interlaced.



3 Rub each thumb clasped in opposite hand using rotational movement. Rub tips of fingers in opposite palm in circular motion.



4 Rub each wrist with opposite hand. Discard the wipe in the appropriate waste bin.

GHA210440